



What's Ahead for DEQ's Stormwater Programs

**Dennis Ades,
Oregon DEQ**

ACWA Stormwater Summit

May 9, 2012



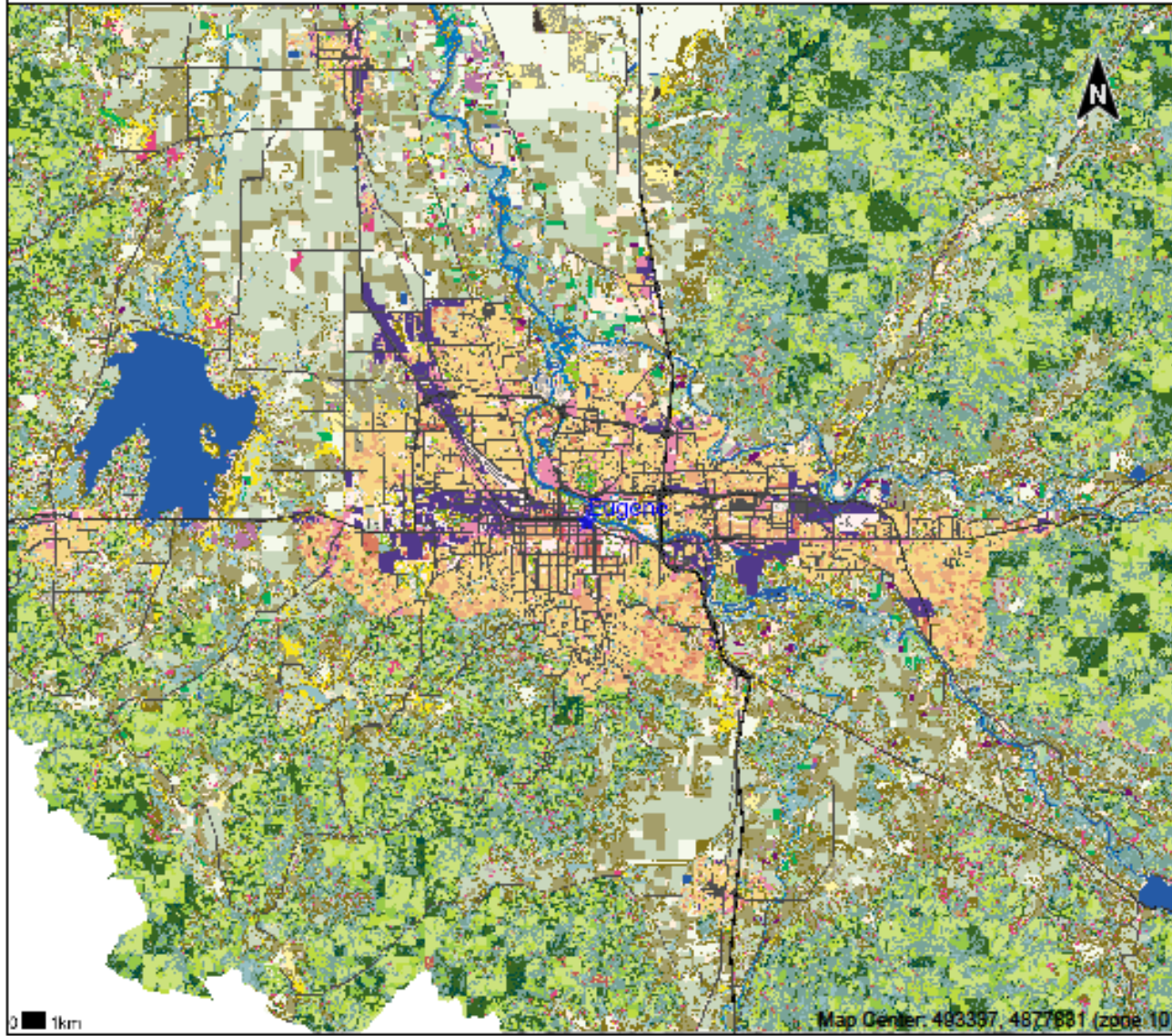
Stormwater Key Driver in Protecting Water Quality



- Address pollutants that cause sub-lethal effects
 - Address pollutants such as pesticides, hydrocarbons, metals and sediment that degrade water quality and habitats.
- Target more natural flow regimes
 - More emphasis on onsite control rather than discharging to rivers and streams.
- Monitor to document program effectiveness.
 - Ambient, BMP, program

Eugene Planned Trend 2050 (2)

Legend



- Major Roads
- Planned Trend 2050
- 1 Residential 2 - 4 BU/ha
- 2 Residential 4 - 8 BU/ha
- 3 Residential 8 - 16 BU/ha
- 4 Residential greater than 16 BU/ha
- 5 Commercial
- 6 Commercial/Industrial
- 7 Industrial
- 8 Residential use Commercial
- 9 Urban non-vegetated unknown
- 10 Rural unknown
- 11 Railroad
- 12 Primary roads
- 13 Secondary roads
- 14 Light duty roads
- 15 Rural non-segregated unknown
- 16 Main arterial non-segregated
- 17 Access roads 8 - 7
- 18 Planned bike ways
- 19 Topographic shadow
- 20 River
- 21 Marine
- 22 Urban tree canopy
- 23 Upland forest open
- 24 Upland forest semi-closed mixed
- 25 Forest closed hardwood
- 26 Forest closed mixed
- 27 Upland forest semi-closed conifer
- 28 Conifers 0 - 20 yrs
- 29 Forest closed conifer 21 - 40 yrs
- 30 Forest closed conifer 41 - 60 yrs
- 31 Forest closed conifer 61 - 80 yrs
- 32 Forest closed conifer 81 - 200 yrs
- 33 Forest closed conifer older than 200 yrs
- 34 Upland forest semi-closed hardwood
- 35 Upland forest
- 36 Grass seed reforestation
- 37 Irrigated annual rotation
- 38 Prairie, Seasonally Wet
- 39 Pasture
- 40 Nursery
- 41 Berries and vineyards
- 42 Double-cropping
- 43 Hops
- 44 Nuts
- 45 Walnuts seed
- 46 Sugar beets seed
- 47 Row crop
- 48 Grass
- 49 Barred grass
- 50 Field crop
- 51 Hayfield

Scale: 1:250,000

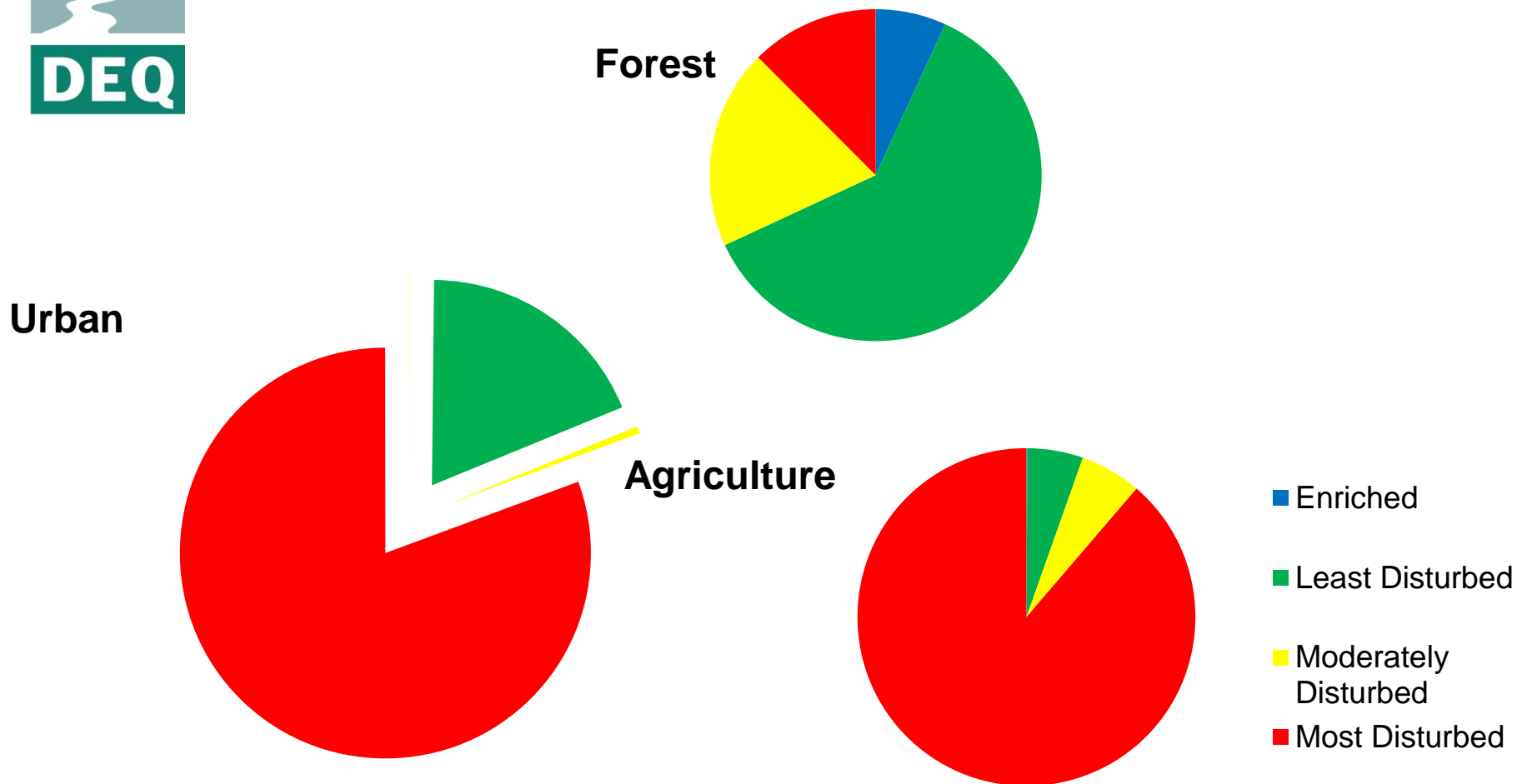
DO NOT USE FOR NAVIGATION

0 1km

Map Center: 493397, 4827881 (zone 10)

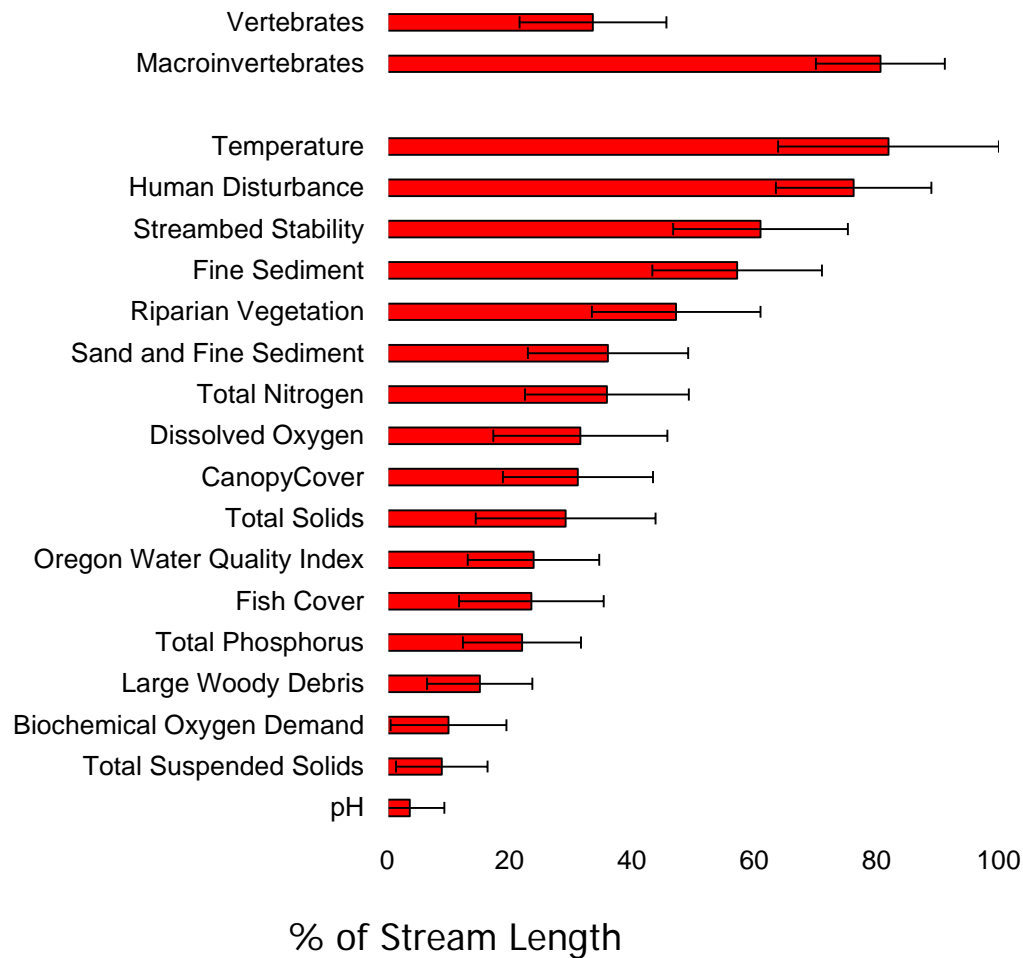


Basin Land Use: Biological Condition



Source: Willamette Basin River and Streams Assessment
<http://www.deq.state.or.us/lab/wqm/assessment.htm>

Urban Impairment





Goals:

Clear expectations

Consistent implementation

Environmental outcomes



Program Priorities for 2012

- **Municipal Permits**
 - Completing the re-issuance of Phase I permits
 - Working with local communities on upcoming renewal of Phase II permits
 - Participating in EPA national enforcement initiative
- **Industrial Permits**
 - Implementing new 1200-Z and 1200-COLS Permits
 - Renewing 1200-A permit for Gravel Mining
- **Construction Permit**
 - Reducing dual regulation



MS4 Permit

- **Restructuring Permits**
 - Implementable and enforceable
 - Aligning requirements with Phase II six minimum measures
- **Clarifying Expectations**
 - Defining performance standards
 - Clarifying steps to achieve TMDL stormwater reduction targets
- **Incorporating Measurable Goals**





Industrial Stormwater Permits

- DEQ issued new 1200-Z and 120-COLS permits on Oct. 1, 2011
- Major Changes
 - Lower metals benchmarks (1200-Z)
 - Facilities discharging to impaired waterbody on 303(d) list must monitor impairment pollutants
 - Tiered corrective actions-treatment BMPs if consistently exceed benchmarks





Construction Stormwater Permits

- 1200-CN Permit
 - Reduce dual regulation
 - Apply for local permits only
 - Automatically covered under state 1200-CN Permit. Must meet certain performance requirements in permit.
 - Applies to projects that disturb less than 5 acres
 - DEQ retains enforcement authority





Stormwater Program Challenges

- Increasing list of impaired waters
 - EPA actions
 - Oregon 2012
- More complicated permits
 - Performance and compliance measures
- More activities falling within program
- More communities within MS4 program
- Budget and staffing resources



Program Opportunities

- Local jurisdictions implement permits on DEQ's behalf
 - Agents process applications, review plans, conduct inspections, provide technical assistance to local operators and document violations
- Basin Approach
 - Collaboration among stakeholders
- Integrated Planning Process
 - Municipal wastewater and stormwater
 - Prioritize actions to achieve regulatory objectives



Thank You

ades.dennis@deq.state.or.us